

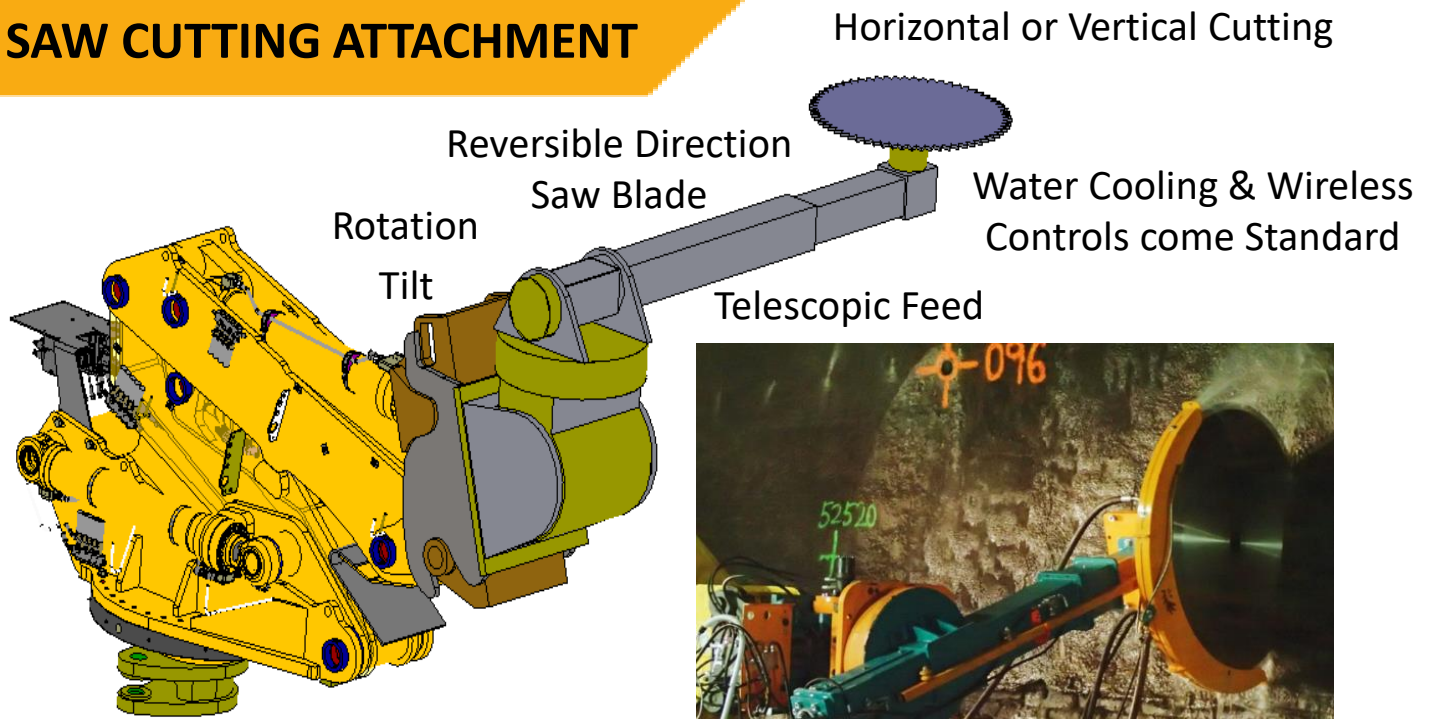
BREAKERBOSS SERIES

ATTACHMENTS & ACCESSORIES

www.rockbreaker.com // AHEAD OF THE GRADE



ROCK SAW CUTTING ATTACHMENT



Final Configuration Subject to Change

SPECIFICATIONS

Rock Saw Cutting Attachment; Model E1400

Unit Weight	950	kgs
Saw Blade diameter	1400	mm
Telescoping Arm	1800	mm
Tilt Angle	90	degrees
Rotation Function	360	degrees
Oil Flow (Saw Blade)	150	lpm
Oil Flow Manipulation Arm	60	lpm
Cutting Optimiser Control	Yes	

BTI and its supplier Echidna have created controls to optimize the cutting process. When sawing concrete and rock using an excavator the saw will become bound and stop. It then needs to be repositioned allowing the blade to start again. This process is very slow and can cause blade breakage which adds to the cost. The cutting optimizer allows the feed, rotation, tilt and blade circulation to work together balancing the maximum amount of blade pressure with arm movement. This produces the optimum cutting performance. This control system, sometimes referred to as "auto driver" helps reduce operator fatigue and accommodates for varying levels of operator skills.

Breaker Technology Ltd.

35 Elgin Street North
 Thornbury, Ontario
 N0H 2P0 Canada
 Phone: 519.599.2015
 Fax: 519.599.6803



Find us on



www.rockbreaker.com
 80800-ENG-0720

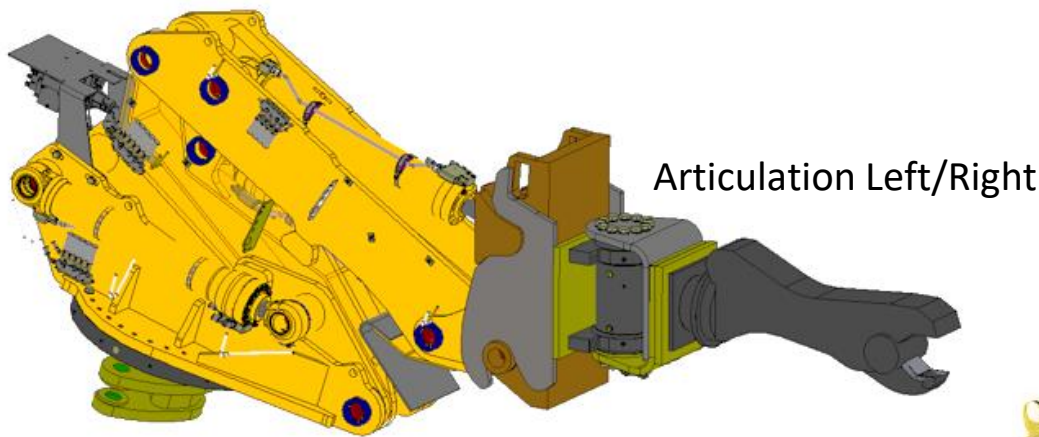
BREAKERBOSS SERIES

ATTACHMENTS & ACCESSORIES

www.rockbreaker.com // AHEAD OF THE GRADE



METAL SHEAR - BOLT & CABLE CUTTER



Articulation Left/Right

Power Rotation



Fast Open and Close Speed

Replaceable Blades

Final Configuration Subject to Change

SPECIFICATIONS

Metal Shear - Bolt & Cable Cutter; Model SH25R

Unit Weight	340	kgs
Jaw Opening	195	mm
Jaw depth	200	mm
Cylinder Output	38	tonnes
Open/Close Speed	1.8/2.4	seconds
Power Rotation	Yes	
Length of Unit	1350	mm
Max dia of metal rod	40	mm

BTI's line of Metal Shears are specifically designed for cutting structural steel and rods. The Jaw is shaped to draw in the bolt for cutting at the back. The replaceable cutting blades can be rotated 4 times and then changed out easily to keep good performance. The powerful cylinder and rotation will allow the mine to cut roof and cable bolts keeping the Draw Point Drift clear of debris.

Breaker Technology Ltd.

35 Elgin Street North
Thornbury, Ontario
N0H 2P0 Canada
Phone: 519.599.2015
Fax: 519.599.6803



Find us on



www.rockbreaker.com
80800-ENG-0720

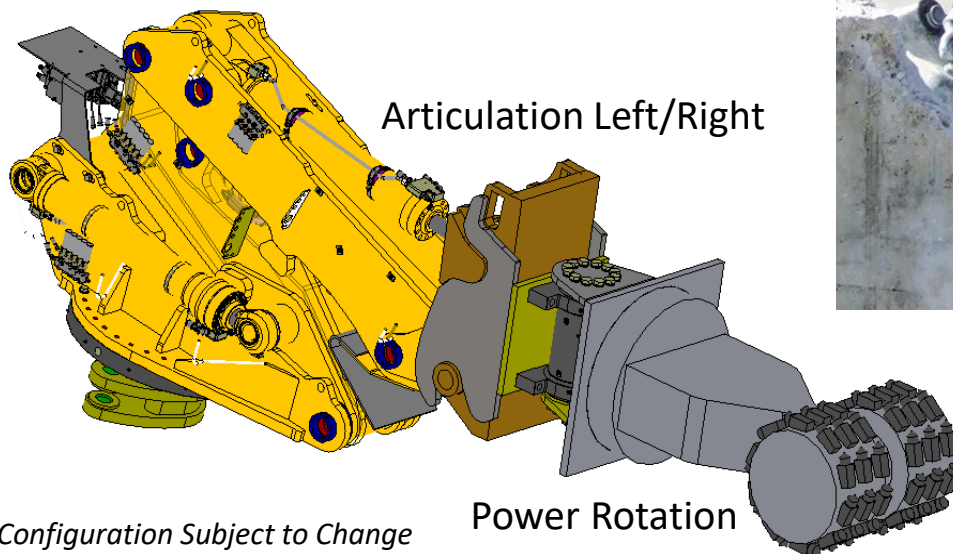
BREAKERBOSS SERIES

ATTACHMENTS & ACCESSORIES

www.rockbreaker.com // AHEAD OF THE GRADE



ROTARY DRUM CUTTER



Powerful Motor
Mounted in-line

Final Configuration Subject to Change

Power Rotation

Diamond Tip Teeth

SPECIFICATIONS

Rotary Drum Cutter; Model TF850

Unit Weight	1140	kgs
Hyd. Motor Power	61	kW
Oil Flow	190	lpm
Max Oil Pressure	350	Bar
Cutting force	35.2	kN
Rotation Torque	10.6	kNm
Length of Unit	1250	mm
Width of Drum	800	mm
Diameter of Drum	595	mm

BTI have joined its supplier Simex to provide the best in Rotary Drum Cutter technology. The model TF850 dual drum is ideal for profiling rock walls to prepare for the installation of steel sets. On the TF850 model, the piston motor is mounted in-line with the drum leaving the motor shaft free from external loads. The replaceable teeth come in different profiles to accommodate rock conditions. The Hydraulic Rotation and the addition of a Helac Actuator will allow the cutter to get aligned to excavate the rock in the draw point area.

Breaker Technology Ltd.

35 Elgin Street North
Thornbury, Ontario
N0H 2P0 Canada
Phone: 519.599.2015
Fax: 519.599.6803



Find us on



www.rockbreaker.com
80800-ENG-0720

BREAKERBOSS SERIES

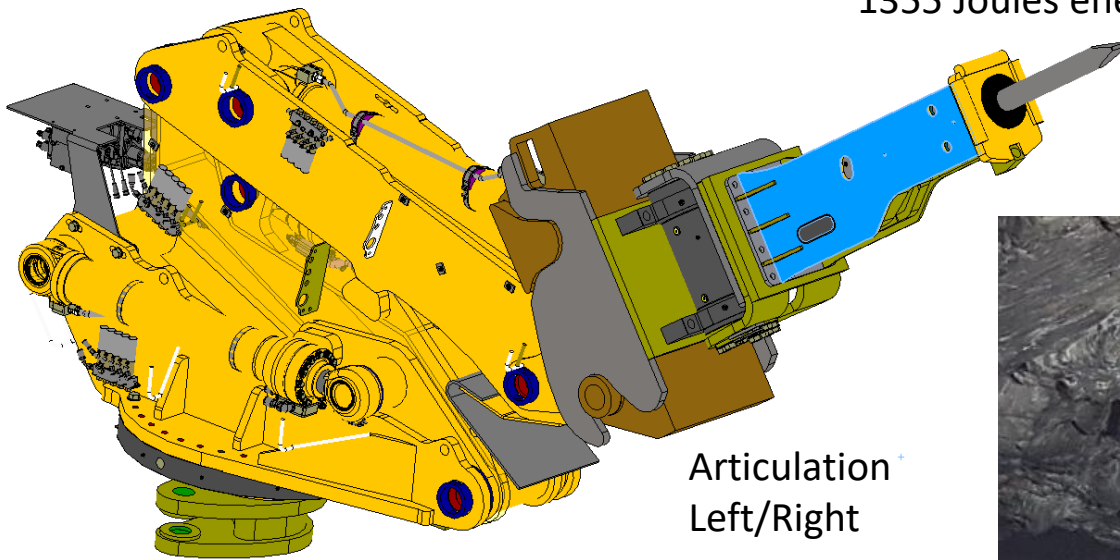
ATTACHMENTS & ACCESSORIES

www.rockbreaker.com // AHEAD OF THE GRADE



SCALING ARM ATTACHMENT

BX10 Scaling Breaker
1355 Joules energy



Articulation
Left/Right



Final Configuration Subject to Change

SPECIFICATIONS

Chuck Housing designed
for Airflush & Auto Grease

Scaling Hammer Attachment - Model BX10SB with Actuator

Unit Weight	1610	kgs
Impact Energy	1355	J
Over Length of Unit	1,800	mm
Tool Dia	78	mm
blow rate	350-900	bpm
Oil Fow	80	lpm
Actuator Swing Left/Right	+/-30	degrees

The BX10 Scaling Breaker has been long used in Scaling Applications, around the world. The scaling hammer attachment will allow the mine to scratch down any loose material, profile the corners at intersection points, and assist in the development of the Draw Point Drifts. The BX10SB has been purposely designed for air flush and auto grease. The front chuck housing has a one-piece bushing and dust seal to avoid ingress of dirt into the hydraulic system.

Breaker Technology Ltd.

35 Elgin Street North
Thornbury, Ontario
N0H 2P0 Canada
Phone: 519.599.2015
Fax: 519.599.6803



Find us on



www.rockbreaker.com
80800-ENG-0720

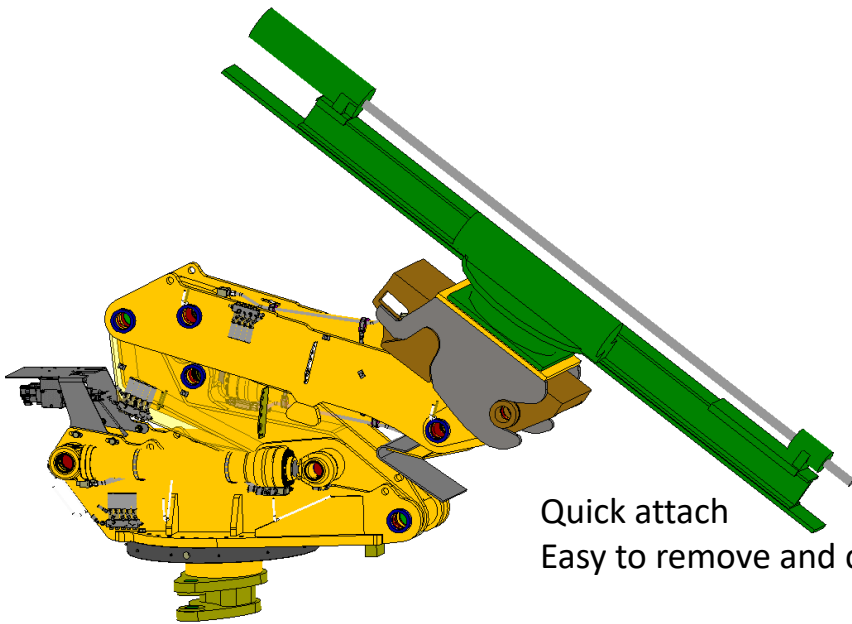
BREAKERBOSS SERIES

ATTACHMENTS & ACCESSORIES

www.rockbreaker.com // AHEAD OF THE GRADE



SINGLE FEED DRILL ATTACHMENT



Quick attach
Easy to remove and connect



HC20 Drifter
4.5 kW output
Up to 400 Nm torque



Remote control console
Easy to operate from inside cab

Final Configuration Subject to Change

SPECIFICATIONS

Single Drill Micro CPA (Montabert) with HC20 Drifter

Unit Weight	690	kgs
Hole Dia	36-76	mm
Feed Length	4,346	mm
Type of Rod	Hex 22/25 - R32	
Oil Flow	60-95	lpm
Oil Pressure	165	Bar
Feed Swing Angle	+/-45	degrees
Air Flow Req'd*	2000-3500	l/mm
Dust Collection**	Optional	

*Mine Supplied ** Optional Dust Collector Not Quoted

Montabert Single Feed Drill, along with HC20 Drifter will provide quality and reliability for your underground mining application. Coupled to the BTi BreakerBOSS5D this will provide excellent flexibility, a wide range of drill angles, and a 76mm diameter hole by 1M deep, suitable for the Darda C20J Rock Splitter. This non-explosive method of handling your largest oversize will benefit your mining operation.

Breaker Technology Ltd.

35 Elgin Street North
Thornbury, Ontario
N0H 2P0 Canada
Phone: 519.599.2015
Fax: 519.599.6803



Find us on



www.rockbreaker.com
80800-ENG-0720

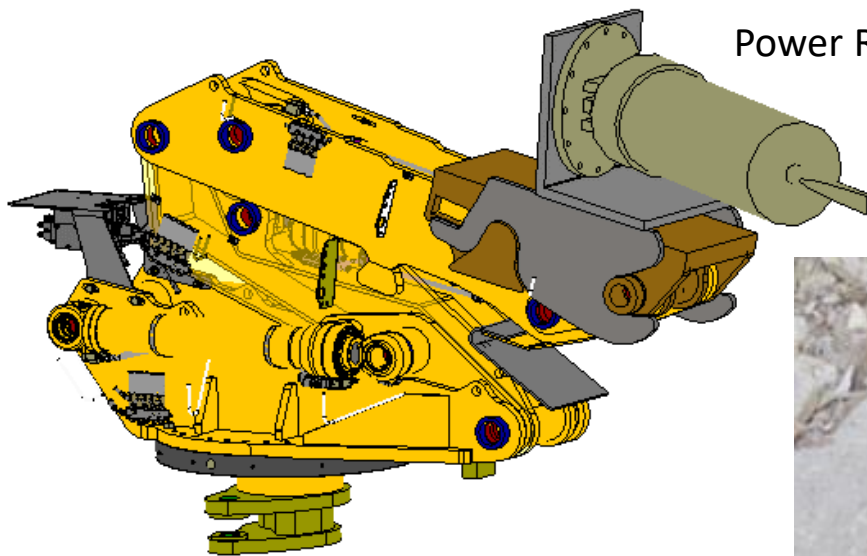
BREAKERBOSS SERIES

ATTACHMENTS & ACCESSORIES

www.rockbreaker.com // AHEAD OF THE GRADE



ROCK SPLITTER ATTACHMENT



Power Rotation

Automatic Wedge Lubrication



Final Configuration Subject to Change

SPECIFICATIONS

Rock Splitter (Darda) - Model C20J

Unit Weight	375	kgs
Length of Unit	2153	mm
Wedge Set length *	640/840	mm
Drill Hole Dia.	76	mm
Drill Hole Depth *	750/950	mm
Splitting Force *	1500/1800	tonne
Oil Flow (Splitter)	100	lpm
Oil Flow (Rotation)	30	lpm
Max Oil Pressure	250	Bar

* Standard and Long Splitting Wedges

The C20 Rock Splitter breaks large boulders and solid rock in a short period of time. Applications in Mining and shaft construction use the quiet and safe way in which they work as an alternative to explosive. The C20 allows the operator to work from a safe distance using the remote control. When attached to the BreakerBOSS5D machine, it can be operated while inside the safe and climate-controlled cab.

Breaker Technology Ltd.

35 Elgin Street North
Thornbury, Ontario
N0H 2P0 Canada
Phone: 519.599.2015
Fax: 519.599.6803



Find us on



www.rockbreaker.com
80800-ENG-0720

BREAKERBOSS SERIES

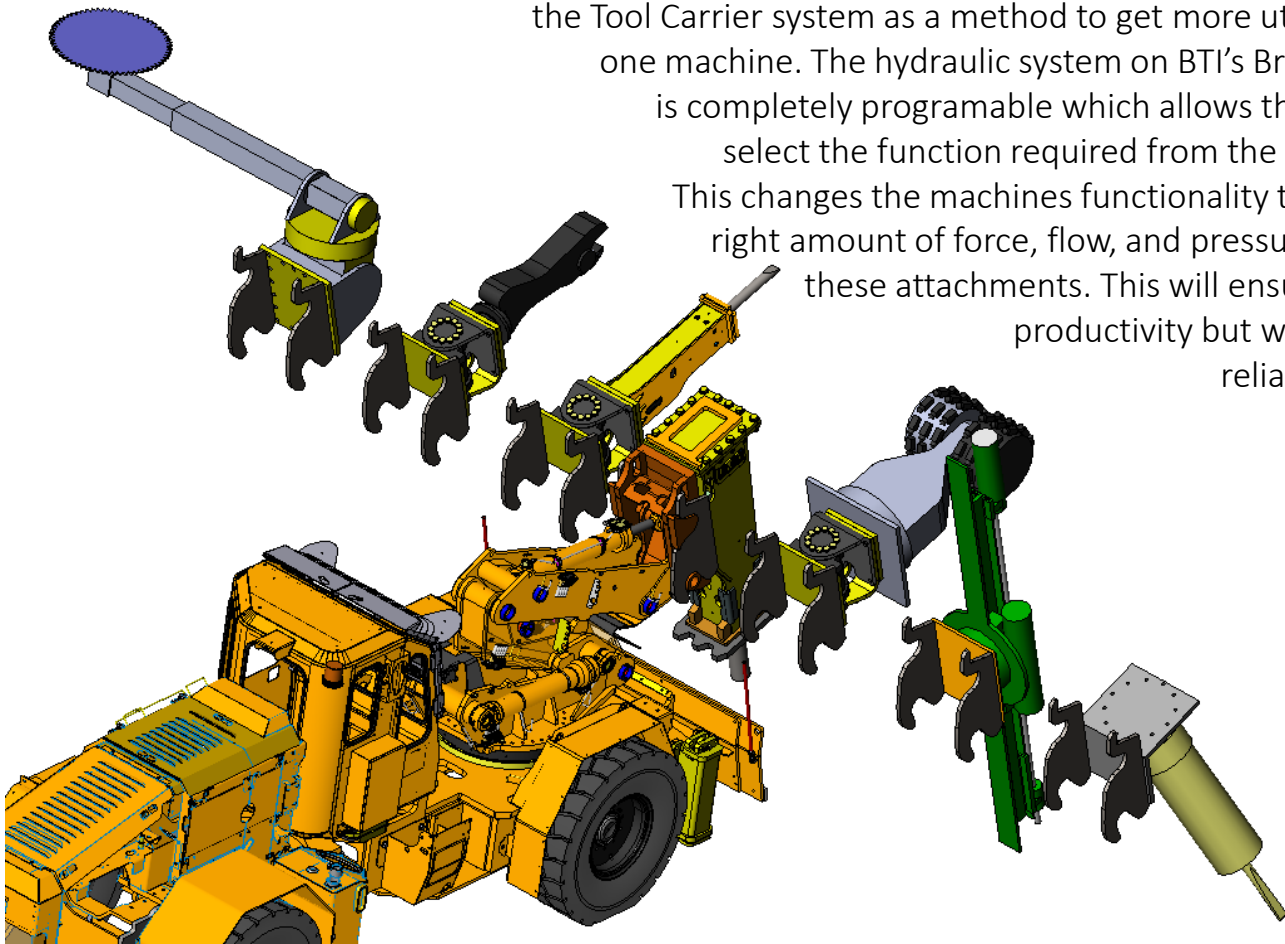
ATTACHMENTS & ACCESSORIES

www.rockbreaker.com // AHEAD OF THE GRADE



BREAKERBOSS - MULTI TOOL CARRIER

BTi (formerly Teledyne) have been selling attachments into the Construction, Mining, and Demolition Markets for over 30 years. This experience coupled with BTi's more than 40 years of manufacturing both Stationary and Mobile Rockbreakers, along with Scalers and other Utility equipment, will provide a successful solution for your Ground Support Cutting and Development challenges. Other industries have adopted the Tool Carrier system as a method to get more utilization from one machine. The hydraulic system on BTi's BreakerBOSS5D is completely programable which allows the operator to select the function required from the touch screen. This changes the machines functionality to provide the right amount of force, flow, and pressure for each of these attachments. This will ensure maximum productivity but with safety and reliability in mind.



Breaker Technology Ltd.

35 Elgin Street North
Thornbury, Ontario
N0H 2P0 Canada
Phone: 519.599.2015
Fax: 519.599.6803



BTi BREAKER
TECHNOLOGY



ASTE
NASDAQ
LISTED



Find us on



www.rockbreaker.com
80800-ENG-0720