



A COMPLETE ROCKBREAKING PACKAGE

MRH/ MRHT/
MRHLP SERIES

MRH/ MRHT/ MRHLP SERIES ROCKBREAKER SYSTEMS

BTI's MRH/ MRHT/ MRHTLP Series Rockbreaker Systems are adaptable for most rockbreaker applications including stationary crushers, gyratory crushers, and grizzlies. The series offers both swing-post and turntable pedestal design with a low-profile option for the underground mining environment. With a 16-to- 31 foot working range, the MRH/ MRHT/ MRHTLP Series carries a 2,000 ft-lb to 8,500 ft-lb (2 700 to 11 500 joules) hydraulic breakers. BTI Rockbreaker Systems are engineered for maximum life using finite element analysis software (FEA) in all raking and breaking functions.

APPLICATIONS:

Jaw // Impact // Grizzly // Gyratory



SPECS

BOOM SPECIFICATIONS

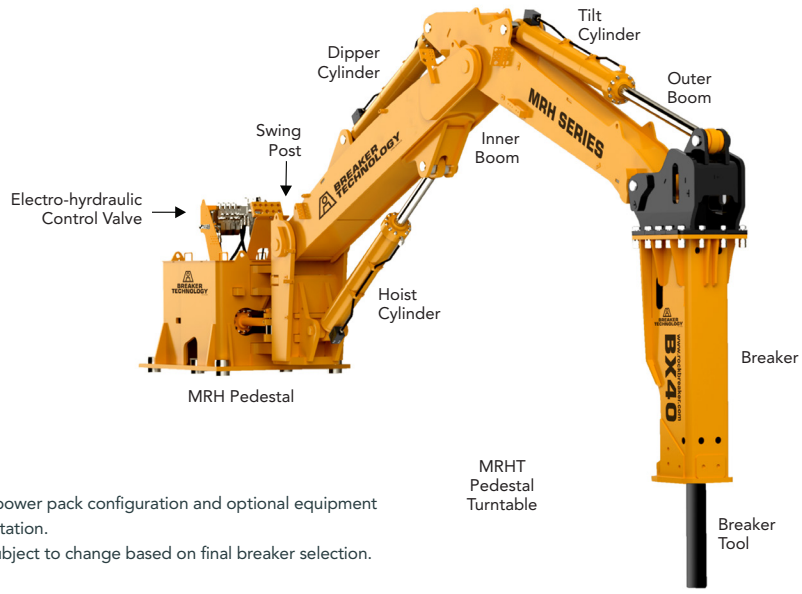
BOOM OPTIONS

- Pedestal to concrete foundation kit
- Pedestal to steel structure mounting kit
- Expander pins
- Cold weather conditioning package
- Cold weather grade steel plate construction

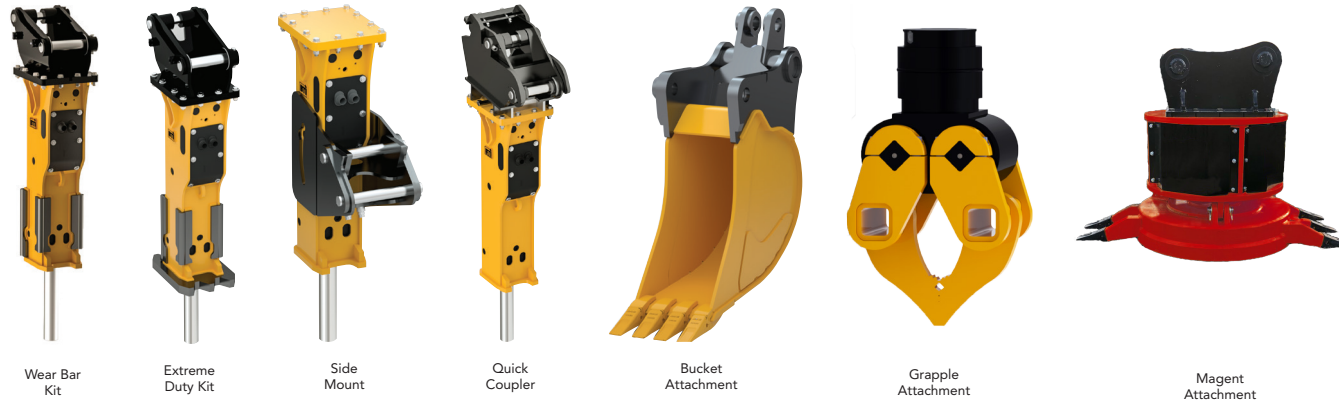
* Operating weight is dependent on final breaker size, power pack configuration and optional equipment

**Dimensions based referenced from center of swing rotation.

**Dimensions nominal (based on BXR50 breaker) and subject to change based on final breaker selection.



MODEL		MRH SERIES						MRHT SERIES					
		MRH16	MRH20	MRH20/25	MRH25	MRH28	MRH31	MRHT16	MRHT20	MRHT20/25	MRHT25	MRHT28	MRHT31
Operating Weight Range (Complete System) *	LB	18,580 - 21,390	19,703 - 23,615	20,208 - 23,460	21,108 - 24,360	16,821 - 18,601	18,364 - 18,982	18,750 - 21,560	19,218 - 22,028	19,538 - 22,348	20,058 - 22,868	17,482 - 19,262	19,246 - 19,864
	KG	8,428 - 9,702	8,937 - 10,712	9,166 - 10,641	9,574 - 11,050	7,630 - 8,438	8,330 - 8,610	8,505 - 9,779	8,717 - 9,992	8,862 - 10,136	9,098 - 10,373	7,930 - 8,737	8,730 - 9,011
Base Dimensions	INCH	4' 0" x 4' 8"						5' 2" x 4' 2"					
	MM	1.2 x 1.4						1.6 x 1.3					
Vertical Breaker Reach Forward**	FT IN	16' 6"	20' 6"	22' 6"	25' 1"	25' 9"	31' 4"	16"	20' 2"	21' 9"	24' 7"	27'	31' 1"
	M	5	6.2	6.9	7.6	7.8	9.5	4.8	6.1	6.6	7.5	8.2	9.4
Vertical Breaker Reach Down**	FT IN	13' 11"	18'	22'	21' 5"	22' 5"	26' 2"	13' 1"	16' 4"	18' 9"	19' 9"	21' 7"	24' 4"
	M	4.2	5.4	6.7	6.5	6.8	7.9	4.2	4.9	5.7	6.0	6.5	7.4
Maximum Reach Forward**	FT IN	23'	27' 7"	30' 8"	32' 1"	33' 2"	38"	24"	27'	28' 10"	31'	33' 9"	37' 6"
	M	7	8.4	9.3	9.8	10.1	11.5	7.3	8.3	8.7	9.5	10.2	11.4
Swing Rotation Angle	Degree	170° Pedestal Swing Post						330° Indexable Turntable					
Recommended Breaker Range		BX20 to BXR85	BX20 to BXR65	BX20 to BXR50		BX20 to BX40	BX20 to BX30	BX20 to BXR85	BX20 to BXR65	BX20 to BXR50		BX20 to BX40	BX20 to BX30



HYDRAULIC BREAKER SPECIFICATIONS

HYDRAULIC BREAKER SPECIFICATIONS

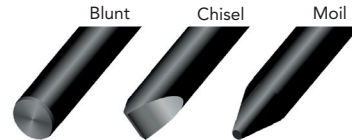
- ⊕ Fully enclosed box housing; reduces vibration back the boom.
- ⊕ Anti blank fire interlock selector; reduces stress on breaker components

HYDRAULIC BREAKER OPTIONS

- ⊕ Side mounted breakers; allows operation in low head room
- ⊕ Wear bars and extreme duty kits; extend service life
- ⊕ Quick couplers and buckets; provides a painless attachment change out for cleaning of rock boxes
- ⊕ Grapple attachment
- ⊕ Magnet attachment

TOOLS

BTI offers a choice of tools and lengths for all breakers



MODEL	ENERGY CLASS	OPERATING WEIGHT	TOOL DIA.	BLOW RATE	FLOW RATE	OPERATING PRESSURE
BX10	1,000 ft-lb (1 350 J)	948 lb (430 kg)	3.1" (78 mm)	900 bpm	21 gpm (80 lpm)	2,000 psi (140 bar)
BX15	1,500 ft-lb (2 000 J)	1,355 lb (615 kg)	3.3" (85 mm)	700 bpm	27 gpm (100 lpm)	2,000 psi (140 bar)
BX20	2,000 ft-lb (2 700 J)	2050 lb (930 kg)	4.1" (105 mm)	550 bpm	29 gpm (110 lpm)	2,300 psi (160 bar)
BX30	3,000 ft-lb (4 100 J)	2688 lb (1 210 kg)	4.7" (120 mm)	550 bpm	37 gpm (140 lpm)	2,450 psi (170 bar)
BX40	4,000 ft-lb (5,420 J)	3,830 lb (1740 kg)	5.3" (135 mm)	500 bpm	42 gpm (160 lpm)	2,450 psi (170 bar)
BXR50	5,000 ft-lb (6 780 J)	4,200 lb (1 910 kg)	5.5" (140 mm)	640 bpm	53 gpm (200 lpm)	2,700 psi (186 bar)

Values based on flow rates from matching hydraulic power unit